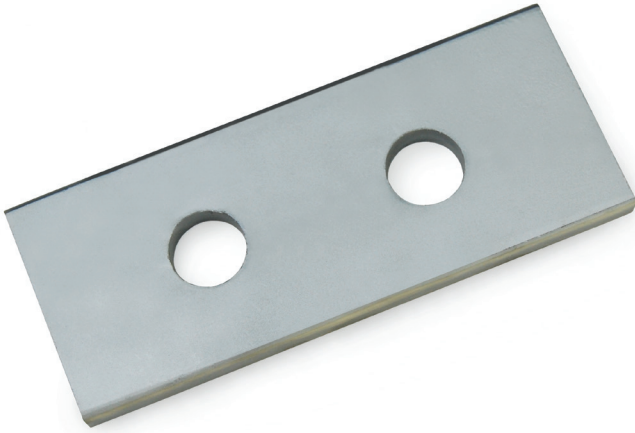


ANCHOR BOLT PLATE



Anchor bolt plates can be tacked to the embedded end of a straight anchor bolt to assist anchorage. Anchor bolt plates can also be used as a washer under the nut on the threaded portion of the anchor bolt.

When used in wood applications, square plate washers are more effective in creating a good friction connection between the sill plate and anchor, important in seismic applications.

Material Specification

Anchor Bolt Plate	Properties
ASTM A36 / A 36M	36 ksi minimum

Protective Coatings

Specification	Method of Deposit / Material
Plain	None
ASTM F2329	Hot Dip Galvanized Zinc
ASTM B695 Cl. 55	Mechanical Galvanized Zinc

Ordering Information

Manufactured Per Print

Products manufactured and inspected per
Quality System ASME B18.18.4M

WestermannBG

4300 Diplomacy Rd.
Fort Worth, TX 76155
Phone: (817) 553-1954
Fax: (817) 553-1964
www.gowestermann.com